

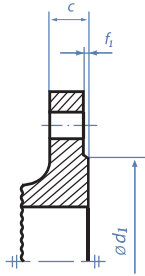


**TYPE A**



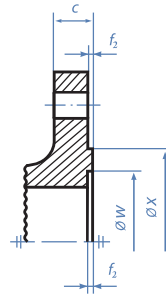
**Face de joint plate**  
Flat face

**TYPE B**



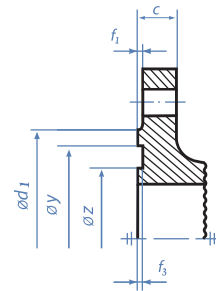
**Face de joint surélevée**  
Raised face

**TYPE C**



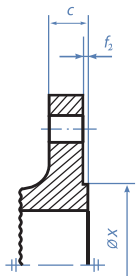
**Emboîtement double mâle**  
Tongue face

**TYPE D**



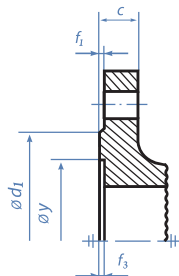
**Emboîtement double femelle**  
Groove face

**TYPE E**



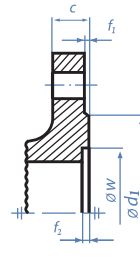
**Emboîtement mâle**  
Male face

**TYPE F**



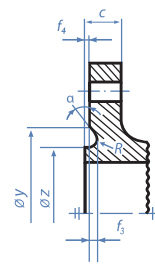
**Emboîtement femelle**  
Female face

**TYPE G**



**Emboîtement Femelle pour joint torique**  
Female face for O-ring

**TYPE H**



**Emboîtement Mâle pour joint torique**  
Male face for O-ring

### TABLEAU DES DIMENSIONS - DIMENSIONS

DN	d1(mm)						f <sub>1</sub> (mm)	f <sub>2</sub> (mm)	f <sub>3</sub> (mm)	f <sub>4</sub> (mm)	W (mm)	X (mm)	Y (mm)	Z (mm)	α	R (mm)
	PN 6	PN 10	PN 16	PN 25	PN 40	PN 63										
10	35	40					2	4.5	4.0	2.0	24	34	35	23	-	2.5
15	40	45					2	4.5	4.0	2.0	29	39	40	28	-	2.5
20	50	58					2	4.5	4.0	2.0	36	50	51	35	41°	2.5
25	60	68					2	4.5	4.0	2.0	43	57	58	42	41°	2.5
32	70	78					2	4.5	4.0	2.0	51	65	66	50	41°	2.5
40	80	88					2	4.5	4.0	2.0	61	75	76	60	41°	2.5
50	90	102					2	4.5	4.0	2.0	73	87	88	72	41°	2.5
65	110	122					2	4.5	4.0	2.0	95	109	110	94	41°	2.5
80	128	138					2	4.5	4.0	2.0	106	120	121	105	41°	2.5
100	148	158	158	162	162	162	2	5.0	4.5	2.5	129	149	150	128	32°	3
125	178	188	188	188	188	188	2	5.0	4.5	2.5	155	175	176	154	32°	3
150	202	212	212	218	218	218	2	5.0	4.5	2.5	183	203	204	182	32°	3
200	258	268	268	278	285	285	2	5.0	4.5	2.5	239	259	260	238	32°	3
250	312	320	320	335	345	345	2	5.0	4.5	2.5	292	312	313	291	32°	3
300	365	370	378	395	410	410	2	5.0	4.5	2.5	343	363	364	342	32°	3
350	415	430	438	450	465	465	2	5.5	5.0	3.0	395	421	422	394	27°	3.5
400	465	482	490	505	535	535	2	5.5	5.0	3.0	447	473	474	446	27°	3.5
450	520	532	550	555	560	560	2	5.5	5.0	3.0	497	523	524	496	27°	3.5
500	570	585	610	615	615	615	2	5.5	5.0	3.0	549	575	576	548	27°	3.5
600	670	685	725	720	735	735	2	5.5	5.0	3.0	649	675	676	648	27°	3.5
700	775	800	795	820	-	840	2	5.5	5.0	3.0	751	777	778	750	27°	3.5
800	880	905	900	930	-	960	2	5.5	5.0	3.0	856	882	883	855	27°	3.5
900	980	1005	1000	1030	-	1070	2	5.5	5.0	3.0	961	987	988	960	27°	3.5
1000	1080	1110	1115	1140	-	1180	2	6.5	6.0	4.0	1062	1092	1094	1060	27°	3.5